

# Extreme Power Electric Motor Monitor

EMI resistant electric motor temperature monitoring

## **Application: Extreme Power Electric Motor Monitor**

### **EMI Resistant Electric Motor Temperature Monitoring**

**Industry:** High Energy Physics

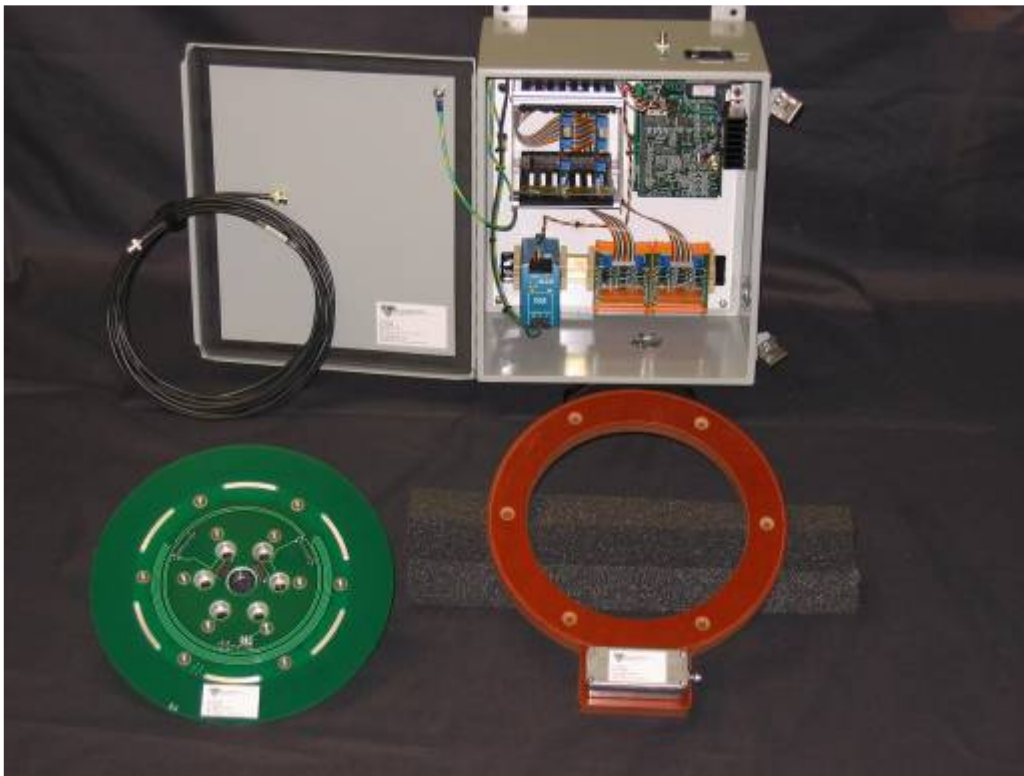
**Product:** AT-7000, Motor Monitor

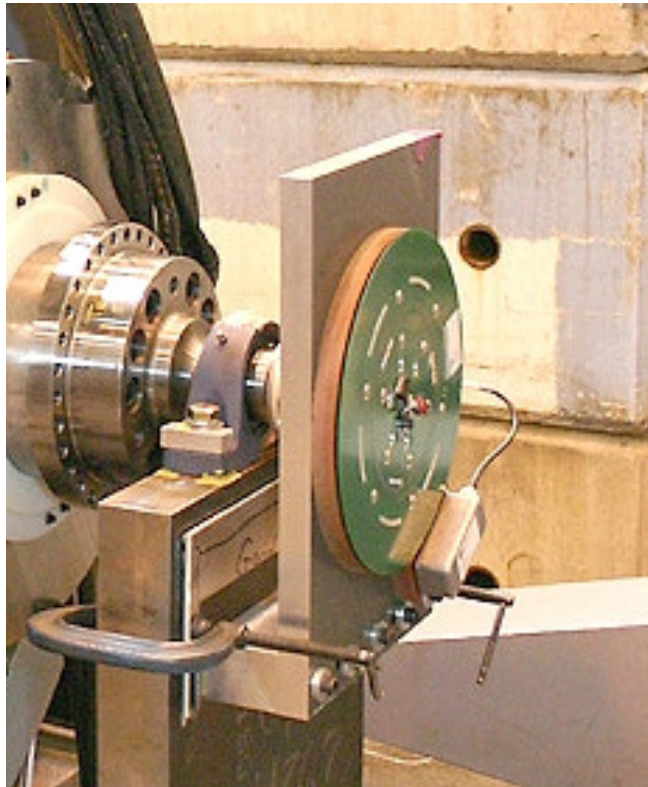
**Parameters measured:** Temperature

When a major university wanted to monitor the temperature of an experimental motor generator set used to produce well over 100 megajoules of energy, Accumetrics was selected to supply wireless telemetry to monitor RTD temperature data in an extremely noisy EMI environment (18 pole motor, variable frequency drive). The Accumetrics digital telemetry system was immune to this EMI, and furthermore was able to provide proprietary sampling techniques to successfully and accurately capture the RTD data without aliased signal contamination, thereby providing clean, dependable analog temperature information from our Receiver to the university.

Benefits:

- EMI resistant digital telemetry
- Anti-aliased data
- Precision measurements
- No slip rings; nothing to wear or maintain





The picture above-left shows the rotating Transmitter for the 8 RTD's on the lower left, the stationary induction power/data Pickup on the lower right, and the Receiver (digital to analog output device) in the background. The above-right picture shows the system in action. The unit was able to operate properly despite extreme EMI from high energy 18 pole variable frequency drive electronics.

The AT-7000 Motor Monitor can also be configured to measure rotor voltages and currents, detect ground faults, and monitor shaft torque and torsional vibration. The Motor Monitor is a specific variation of the AT-7000 product line.



## What are divisions of PCB Piezotronics?

PCB Piezotronics, a member of the PCB Group families of companies, has five major divisions, all of which offer targeted sensor technologies. These divisions are supported by an active outside direct sales force of Field Application Engineers, as well as international direct sales offices throughout the world. Individual PCB Piezotronics divisions, locations and their primary product specialties include:

**PCB PIEZOTRONICS**<sup>INC.</sup>



**Depew, NY, USA** - [www.pcb.com](http://www.pcb.com) – Piezoelectric, ICP®, piezoresistive & capacitive pressure, acoustic, force, torque, load, strain, shock & vibration sensors.

**AEROSPACE & DEFENSE**  
A PCB PIEZOTRONICS DIV.



**Depew, NY, USA** - [www.pcb.com/aerospace](http://www.pcb.com/aerospace) – Sensors & Instrumentation for aerospace & defense applications, including air and spacecraft testing.

**AUTOMOTIVE SENSORS**  
A PCB PIEZOTRONICS DIV.



**Farmington Hills, MI & Depew, NY, USA** - [www.pcb.com/auto](http://www.pcb.com/auto) – Sensors & Instrumentation for automotive testing, including modal analysis; NVH; component durability; powertrain testing; vehicle dynamics; safety and regulatory testing.

**IMI SENSORS**  
A PCB PIEZOTRONICS DIV.



**Depew, NY, USA** - [www.imi-sensors.com](http://www.imi-sensors.com) – Industrial vibration sensors, bearing fault detectors, mechanical vibration switches, panel meters, cables & accessories for predictive maintenance and equipment protection. Also providing pressure sensors and accelerometers for precision measurement requirements in the power generation and energy industries

**LARSON DAVIS**  
A PCB PIEZOTRONICS DIV.



**Farmington Hills, MI & Provo, UT, USA** [www.larsondavis.com](http://www.larsondavis.com) – Precision microphones, sound level meters, noise dosimeters, audiometric calibration systems.

**PCB LOAD & TORQUE**  
A PCB PIEZOTRONICS DIV.



**Farmington Hills, MI, USA** - [www.pcb.com/loadandtorque](http://www.pcb.com/loadandtorque) – High quality, precision load cells, wheel force transducers, torque transducers, telemetry systems, and fastener torque-tension test systems.

 **ACCUMETRICS**<sup>INC.</sup>  
A PCB GROUP COMPANY

409 Front Street, Schenectady NY 12305 USA

Phone 518-393-2200 ■ Fax 716-684-0987

Email [telemetry@pcb.com](mailto:telemetry@pcb.com) ■ Website [www.accumetrix.com](http://www.accumetrix.com)